

Slave Housing Data Base

Building Name: Green Level Farm – Brick Domestic Building

Evidence Type: Extant

County: King William

State: Virginia

Investigators: Andrew Stempel, Doug Sanford

Institutions: Center for Historic Preservation, University of Mary Washington

Project Start: 7/11/07

Project End: 7/11/07

Summary Description:

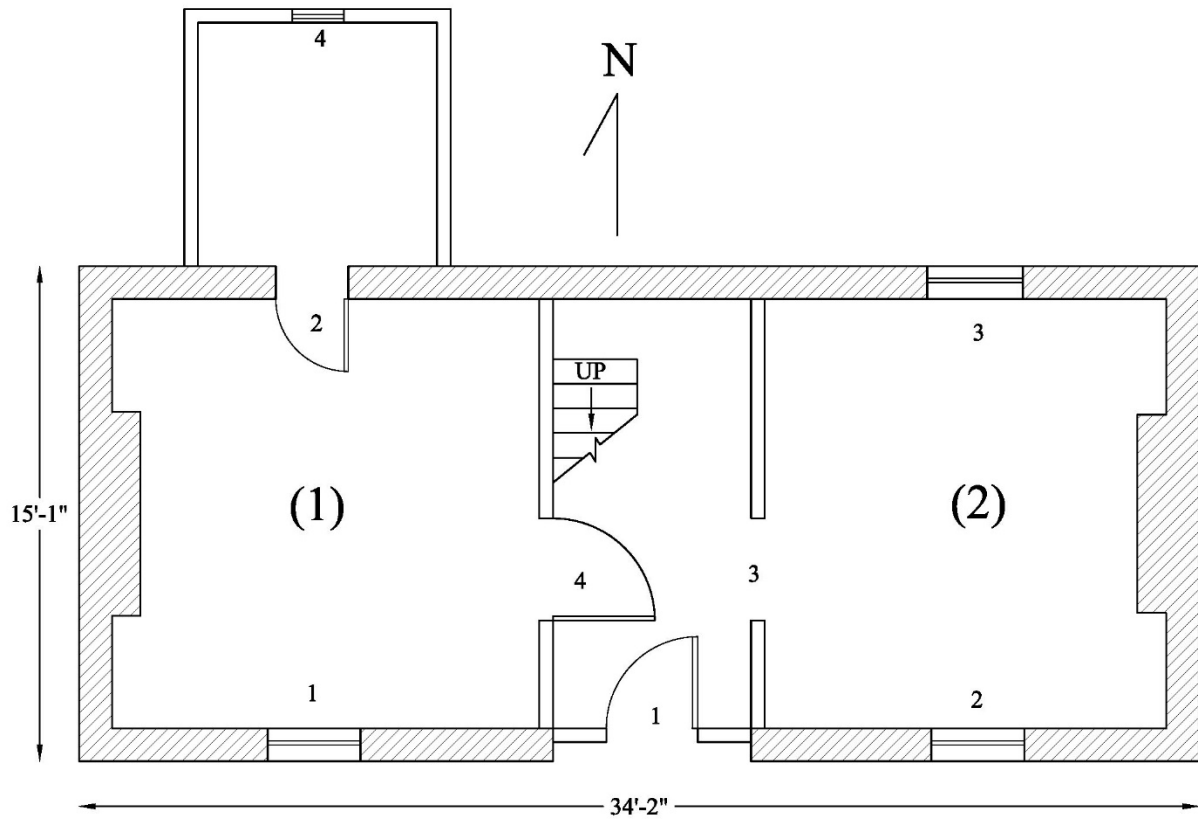
The Green Level Farm outbuilding is a one-story brick structure with two rooms flanking a central passage, accessed by a doorway on the south elevation; each room is served by an interior end chimney. It is @ 34'2" by 15'1" in dimension. The side-gabled roof encloses a garret that was originally divided into two heated spaces. A modern standing seam metal roof currently is in place; a modern one-room addition on the rear serves as a bathroom. The structure has a clear symmetry given its central doorway and passage, first floor rooms of nearly equal size, end chimneys, and aligned window placement on the front and rear. The current doorway to the bathroom addition likely denotes the location of an earlier window. Dating evidence is provided by the presence of fully formed machine-cut nails and a mixture of common bond (mostly 5:1, some 3:1 and 7:1) brickwork, suggesting an antebellum period origin, circa 1840s-50s.

The staircase in the passage is a replacement and, given the presence of modern wood paneling in this space, it is difficult to ascertain if this marks an original position. Each of the garret rooms has a fireplace, with these rooms once separated by partition walls that framed the stairwell. Whitewash survives on the garret rafters and fireplaces and on the brick interior walls of the first floor rooms. This duplex is unusual in that it does not conform to the standard arrangement of two cells with separate exterior doorways, and because the garret spaces were heated. In addition, the east exterior wall exhibits a finished opening (with a series of corbelled courses above) through the brickwork to access the flue of the interior end chimney, presumably to accommodate another fireplace. This evidence suggests that either another bay existed at one time in this location, or that one had been planned but never executed.

The distance from the NW corner of the brick building to the NE corner of the modern kitchen addition to the main house is 107 feet; it is 33 ft. 7 in. from the NE corner of the kitchen addition to the NE corner of the original brick 1.5-story portion of the main house; from there to the east side of the main house, it is a distance of 14 ft. 5 in.: thus it is a total distance of 155 ft. between the main house and the brick building. These two buildings share the same orientation. The main house is a 2 ½-story structure with the first floor of brick (5:1 common bond) and a frame second story exhibiting horizontal, beaded weatherboard siding. Oral history suggests that the house originally was frame, but was later altered to replace the first story with the existing brick construction.

Principal Construction Type: Masonry (brick)
One Story – With Garret

Footprint:



Number of Rooms: 5 (3 down, 2 up (attic) and a central passage)

- Dimensions:**
- (1) Rm. 1 (west): 13 ft. 1.5 in. (N-S) x 13 ft. x 8 ft. 1.5 in. (H)
 - (2) Rm. 2 (east): 13 ft. 1 in. (N-S) x 12 ft. 5.5 in. x 8 ft. 1.5 in. (H)
 - (3) 7 ft. (N-S) x 7 ft. 4 in. (bathroom)
 - (4) ~16 ft. (N-S) x 16 ft. (attic, east room)
 - (5) ~16 ft. (N-S) x 13 ft. 7 in. (attic, west room)
 - (6) Passage: 13 ft. (N-S) x 6 ft.

Period I: Attic partitions; likely had a window where current the doorway the modern bathroom addition.

Doors: 4 (1 exterior, 3 interior)

	(1) Passage	(2) Rm. 1	(3) Passage
Type:	6 panel	4 panel	None present
Dimensions:	2 ft. 9.75 in. (W) x 6 ft. 3 in. (H)	2 ft. 2.5 in. x 6 ft. 4 in.	2 ft. 11.5 in. (W) x 6 ft. 8.5 in. (H)
Hardware:	HL butt hinge; stock lock & ceramic knob	Modern H-shaped, butt hinges	None
Swing:	In	Out (to Rm. 1)	N/A
Replacement:		Modern insertion for bathroom addition; likely former window location	Opening from passage into Rm. 2 (to east)

	(4) Passage
Type:	Modern plywood with 2 x 4 supports
Dimensions:	2 ft. 11.5 in. (W) x 6 ft. 8.5 in. (H)
Hardware:	Modern butt hinges
Swing:	In (to passage)
Replacement:	Entrance from passage to Rm. 1

Windows: 6 (4 down, 2 up)

	(1) Rm. 1	(2) Rm. 2	(3) Rm. 2
Type:	6/6 double-hung sash	6/6 double-hung sash	6/6 double-hung sash
Dimensions:	2 ft. 3 in. (W) x 3 ft. 9 in. (H)	2 ft. 3 in. (W) x 3 ft. 9 in. (H)	2 ft. 3 in. (W) x 3 ft. 9 in. (H)
Hardware:	None	None	None
Shuttered/Slide/Swing:	Shuttered	Shuttered	N/A

	(4) Bathroom	(5) East garret	(6) West garret
Type:	Screen casement	4 pane fixed sash	4 pane fixed sash
Dimensions:	1 ft. 6 in. (W) x 1 ft. 10 in. (H)	1 ft. 6.5 in. (W) x 1 ft. 9 in. (H)	1 ft. 7 in. (W) x 1 ft. 8.5 in. (H)
Hardware:	Modern hardware	None	None
Shuttered/Slide/Swing:	Swings out	N/A	N/A

Brick opening for east garret window measures 2 ft. 6 in. (H) x 1 ft. 10 in.; while brick opening for west garret window measures 2 ft. 5.5 in. (H) x 1 ft. 8.5 in. Both openings have been altered (reduced in size) with current windows as replacements. The two windows on the south wall are likely in the original locations, but the shutters are modern additions, nailed into the brick wall.

EXTERIOR

Foundation:

Continuous Masonry: Brick (brick measures 8 in. x 3.75 in. x 2 in.)

Thickness: cannot be observed; but wall thickness about 1 ft.

Bond: Common (5:1 bond prevails in most locations; but note 3:1 bond at base of rear/north wall (east end) and 7:1 bond at base of west wall.

Mortar Type: Sand (with some shell observed)

Joint: Flush

Repaired: Yes

Shed/Porch: No

Roof:

Roof Form: Gable

Roof Covering: Metal, standing seam (replacement).

Roof Framing: Boards for roofing appear to be sash sawn.

Exposed: Yes

Form: Common Rafters (sash sawn; mortise and tenon with wood pegs; collars with lap joints and machine-cut nails)

Rafter Number: 13 pairs

Rafter Dimensions: ~ 2.5 in. x 4 in.; 2 ft. 9 in. to 3 ft. 1 in. apart (on center)

Collar Ties: Yes

Method of Joining: Lap joints and machine-cut nails.

Height from Roof Peak:

Height to Floor: from floor to roof peak: 7 ft. 4.5 in.

The box cornice on the south façade (modern replacement) is composed of circular sawn boards held together with wire nails; the bottom of the cornice is 7 ft. 7 in. above the ground surface.

Walls:

Masonry: Brick

Bond: American – Common (mostly 5:1, but some 3:1, 7:1)

Mortar Type: Sand (some shell observed where original mortar is exposed)

Joint: Flush

Chimney(s):

Chimney (1): Rm. 1 (west)

Material: Brick

Location: Interior/End

Chimney (2): Rm. 2 (east)

Material: Brick

Location: Interior/End

INTERIOR

Note interior evidence for a “double” partition in the attic, with walls on either side of the central stairway entry into the attic (measuring 3 ft. 2 in. wide). The height of the ceiling (from floor to bottom of attic floor) in both first-floor rooms is 8 ft. 1.5 in. The walls in the central passage have been sided, with vertical boards (6.5 in. wide) on the south wall, and horizontal wooden siding that imitates joined boards on the east and west.

Wall Framing: Brick wall surfaces.

Wall Finish: Whitewash

Fireplace (1): End wall (Rm 1., west wall); Center

Fireplace Material: Brick

Fireplace Overall Dimensions: 6 ft. (W) x 2 ft. 0.5 in. (H); blocked by wood stove sheeting.

Fireplace Opening Dimensions: unknown, except 2 ft. deep.

Hearth Material: Cannot observe; possibly removed; covered by later flooring

Fireplace (2): End wall (Rm. 2, east wall) – Center

Fireplace Material: Brick

Fireplace Overall Dimensions:

Fireplace Opening Dimensions: 3 ft. 3.5 in. (W) x 2 ft. 1.5 in. (H) x 1 ft. 9 in. (D); Original dimensions estimated at 3 ft. (W) x 4 ft. (H)

Hearth Material: Cannot observe; possibly removed; covered by later flooring.

Fireplace (3): End (garret, west room); chimney stack measures 5 ft. 0.5 in. x 1 ft. 8.5 in.

Fireplace Material: Brick

Fireplace Overall Dimensions:

Fireplace Opening Dimensions: 2 ft. 9 in. (W) x 2 ft. 9 in. (H) x 1 ft. 4.5 in. (D)

Hearth Material: Brick

Fireplace (4): End (garret, east room); chimney stack measures 5 ft. 1.5 in. x 2 ft. 5 in.

Fireplace Material: Brick

Fireplace Overall Dimensions:

Fireplace Opening Dimensions: 2 ft. 6 in. (W) x 2 ft. 9 in. (H) x 1 ft. 4 in. (D)

Hearth Material: Brick

The fireplace in the east room of the garret has a brick shelf; above the shelf the stack “steps” up and narrows as it goes higher. The masonry of the fireplace in the west room “steps” up and narrows in the same manner as in the other room, but with a shelf placed higher on the face of the mass.

Stairs: Yes; located on west side of central passage, with initial steps in NW corner of passage, leading upward to the south.

Type: Stringer stair (modern replacement)

Subfloor Pit: No

Floor: Wood

Floorboards Dimension: Narrow boards, tongue & groove with wire nails,
3 to 5.5 in. wide (replacement)

Dating: 1830s to 1850s, based on fully formed machine-cut nails and mixture of
common brick bonds; sash sawn wood.