

## Slave Housing Data Base

**Building Name:** Howard's Neck, Quarter C

**Evidence Type:** Extant

**Historical Site Name:** Howard's Neck

**City or Vicinity:** Cartersville

**County:** Goochland

**State:** Virginia

**Investigators:** Douglas W. Sanford; Dennis J. Pogue

**Institutions:** Center for Historic Preservation, UMW; Mount Vernon Ladies' Association

**Project Start:** 8/7/08

**Project End:** 8/7/08

### Summary Description:

Howard's Neck Quarter C is currently a two-story structure, but originally consisted of a one-story log crib divided into two rooms, with a side-gable roof and central brick chimney, resting on masonry piers (six supporting the original section, at the four corners and two at the middle of each long wall), with a modern rear addition and front porch. The log portion measures 16 ft. 2 in. wide (N-S) x 31 ft. 6.5 in. long (E-W). The logs are hewn on two sides and are joined at the corners with v-notches; the relatively wide gaps between the logs are chinked with stone. The structure currently is covered in wooden siding, but the rear wall of the log crib enclosed within the addition indicates that the logs were exposed originally; remnants of whitewash are attached to the logs on the exterior and to all of the interior surfaces. The two first-floor rooms each are accessed by single doorways set in the south facade, with evidence for two original windows directly opposite on the north wall. An original window equipped with a bracket to accommodate a sliding shutter survives in Room 2; the window in Room 1 has been enlarged to create a doorway providing direct access between that room and the rear addition. All of the existing sash windows therefore are likely to be modern additions and or insertions. A doorway allows direct access between the two first-floor rooms, and this may be an original feature. A ladder stair providing access to the second story is positioned in the southwest corner of Room 2, but it is not certain whether the original attic spaces were accessible.

### Notes:

This is the third (western) of three surviving quarters, aligned east-west on a moderate slope, positioned several hundred yards southwest of the main house complex. This building (along with Quarter A) was raised to two stories in the late 19<sup>th</sup> to early 20<sup>th</sup>-century period, and the roof frame was completely replaced; at Quarter B the roof was replaced but a second story was not added. Detailed information was not recorded for the modern second story and one-story rear addition and front porch. Holes for pegs presumably to support shelf boards are located on the interior face of logs in the north (rear) wall. The plan is similar to that for Quarter B, to include the same insertion of a doorway through the original window opening in the rear wall of Room 1. In Room 2 the

ceiling joists measure 8 to 9.5 in. in diameter; left in the round, except the top surface, which is flattened; debarked; distance from center-to-center ranges from 34 to 36 in.

**Bibliography:**

Colonial Williamsburg Foundation drawings (1983) for full measurements of rooms and other details.

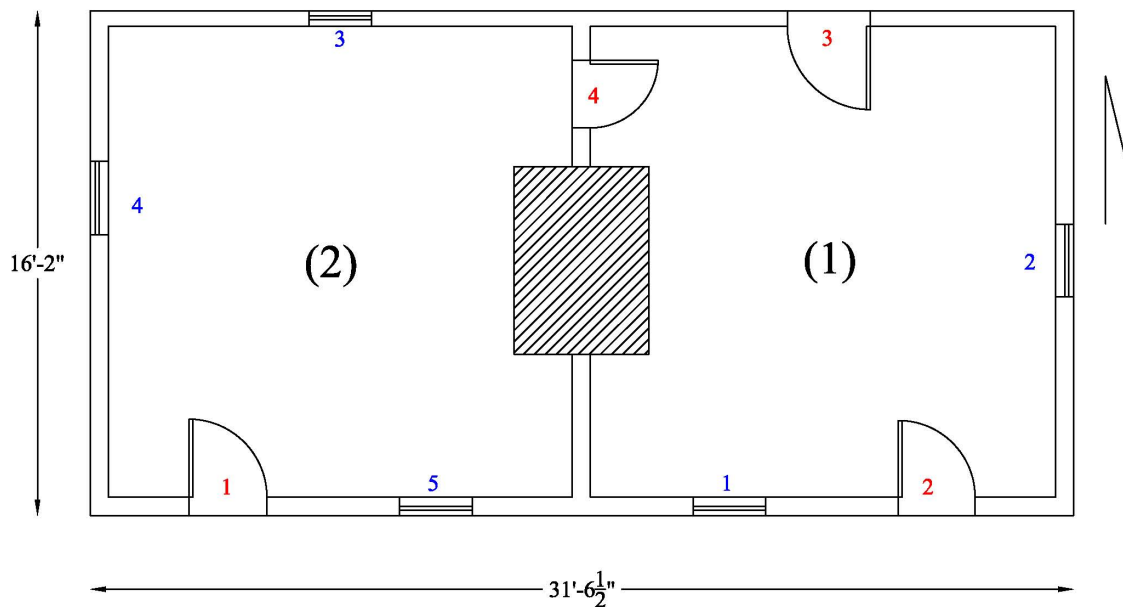
Dell Upton, *Slave Housing in 18th-Century Virginia* (1982) and *White and Black Landscapes in Eighteenth-Century Virginia* (1988).

**Principal Construction Type:**

Log (main, original portion); frame construction for second story, rear addition, and porch. The entire structure is clad on the exterior with later horizontal circular sawn boards attached with wire nails.

**Two Story:** (at present; likely 1 story with attic originally)

**Phase I Footprint:**



**Number of Rooms:** 2

**Dimensions:** (1) 15 ft. (N-S) x 14 ft. 11 in. (E-W)  
(2) 15 ft. 0.5 in. (N-S) x 14 ft. 10.5 in. (E-W)

Currently with 2 rooms in second story, 2 in rear shed, and with an open porch running along the south façade.

**Doors: 6**

	<b>Rm. 2 (1)</b>	<b>Rm. 1 (2)</b>	<b>Rm. 1 (3)</b>
<b>Type:</b>	<b>5 panel (horizontal)</b>	<b>5 panel (horizontal)</b>	<b>Board &amp; batten</b>
<b>Dimensions:</b>	<b>2 ft. 6 in. (W) x 6 ft. 3 in. (H)</b>	<b>2 ft. 5.75 in. (W) x 6 ft. 5 in. (H)</b>	<b>2 ft. 6 in. (W) x 6 ft. 1 in. (H)</b>
<b>Hardware:</b>	<b>Modern butt hinges</b>	<b>Modern butt hinges</b>	<b>Modern butt hinges</b>
<b>Swing:</b>	<b>In</b>	<b>In</b>	<b>In</b>
<b>Replacement:</b>	<b>Yes, modern</b>	<b>Yes, modern</b>	<b>Later insertion into log wall; likely a former window location</b>

	<b>(4)</b>	<b>Closet (5)</b>	<b>Stair (6)</b>
<b>Type:</b>	<b>Board &amp; batten; modern</b>	<b>Board &amp; batten</b>	<b>Board &amp; batten</b>
<b>Dimensions:</b>	<b>2 ft. 6 in. (W) x 6 ft. 1 in. (H)</b>	<b>2 ft. 3 in. (W) x 6 ft. 0.5 in. (H)</b>	<b>1 ft. 5 in. (W) x 5 ft. 11.5 in. (H)</b>
<b>Hardware:</b>	<b>Modern butt hinges</b>	<b>Modern butt hinges</b>	<b>Modern butt hinges</b>
<b>Swing:</b>	<b>In (into Room 1)</b>	<b>In (into Room 2)</b>	<b>Out (into Room 2)</b>
<b>Replacement:</b>	<b>Yes; insertion into original partition</b>	<b>Modern construction within partition</b>	<b>Part of stairs' insertion</b>

**Windows: 5**

	<b>Rm. 1 (1)</b>	<b>Rm. 1 (2)</b>	<b>Rm. 2 (3)</b>
<b>Type:</b>	<b>Double hung sash; 6/6</b>	<b>Double hung sash; 6/6</b>	<b>Slide (likely original)</b>
<b>Dimensions:</b>	<b>2 ft. 4 in. (W) x 4 ft. 5.5 in. (H) – sash opening</b>	<b>2 ft. 4 in. (W) x 4 ft. 5 in. (H) – sash opening</b>	<b>24 in. (W) x 23 in. (H)</b>

<b>Hardware:</b>	<b>None</b>	<b>None</b>	<b>None</b>
<b>Shuttered/ Slide/ Swing:</b>	<b>N/A</b>	<b>N/A</b>	<b>Slide (itself with wire nails); original frame with pegs, square nails</b>

	<b>Rm. 2 (4)</b>	<b>Rm. 2 (5)</b>
<b>Type:</b>	<b>Double hung sash; 6/6</b>	<b>Double hung sash; 6/6</b>
<b>Dimensions:</b>	<b>2 ft. 4 in. (W) x 4 ft. 5 in. (H)</b>	<b>2 ft. 4 in. (W) x 4 ft. 5 in. (H)</b>
<b>Hardware:</b>	<b>None</b>	<b>None</b>
<b>Shuttered/ Slide/ Swing:</b>	<b>N/A</b>	<b>N/A</b>

## EXTERIOR

### Foundation:

**Masonry Piers:** Brick

**Number:** 6 (four corners are L-shaped; 2 middle are rectangular; all 8.5 in. thick)

**Dimensions:** NE & NW corner: 2 ft. 1 in. x 2 ft. 1 in.; SE corner: 1 ft. 10 in. (E-W) x 2 ft. 1 in. (N-S); Middle south pier: 2 ft. 11 in. long; SW corner: 1 ft. 9 in. x 1 ft. 9 in.

**Mortar Type:** Portland cement

**Joint:** Flush

**Repaired:** Yes

**Porch:** Yes

**Location:** On front (south) side with cinder block piers (later addition; same as for Building B): measures 5 ft. 9 in. (N-S) x 28 ft. 10 in. (E-W).

### Roof:

**Roof Form:** Gable

**Roof Covering:** Standing seam sheet metal (later construction)

**Roof Framing:** not visible

**Exposed:** No  
**Form:** NA  
**Rafter Number:** NA  
**Rafter Dimensions:** NA

**Building Height:**

<b>Ground to Soffit:</b> 17 ft. 3 5/8 in.	<b>Siding to Soffit:</b> 15 ft. 5 5/8 in.
<b>Ground to Apex:</b> 22 ft. 8.5 in.	<b>Siding to Apex:</b> 21 ft. 10.5 in.
<b>Ground to Top of Eave:</b> 18 ft. 2 1/2 in.	<b>Siding to Top of Eave:</b> 16 ft. 4.5 in.

**Walls:**

**Log:**

**Dimensions:** 9-10 in.  
**Finish:** Flat Sides – Hewn on 2 sides; round at top & bottom; except top  
log  
**Notching:** V  
**Chinking:** Composite (stones & mud) – mostly stones

**Chimney(s):** 5 ft. 11 in. wide (N-S) x 4 ft. 4 in. (E-W)

**Chimney (1):** Foundation of brick  
**Material:** Brick  
**Location:** Interior/Center  
**Height:**

INTERIOR

**Wall Framing:** Log

**Wall Finish:** Whitewash

**Fireplace (1):** Center

**Fireplace Material:** Brick  
**Fireplace Overall Dimensions:** covered, not observable  
**Hearth Material:** Brick  
**Hearth Dimensions:** covered, not observable

**Fireplace (2):** Center

**Fireplace Material:** Brick  
**Fireplace Overall Dimensions:** covered, not observable  
**Hearth Material:** Brick  
**Hearth Dimensions:** 5 ft. 11 in. (L) x 1 ft. 10 in. (W)

**Stairs:** Yes – inserted, modern ladder stair, with landing; and closet beneath

**Type:** Ladder  
**Stairwell Dimensions:** 7 ft. 2 in. x 2 ft. 2 in.  
**Number of Treads:** 9

**Stair Tread Dimensions:** 2 ft. 2 in. (L) x 8 in. (W) x 9 in. (H)

**Subfloor Pit:** No

**Floor:** Wood

**Dating:**

**Dendrochronology:** none

**Other Date:** Second quarter of the 19th century

**Dating Evidence:**

**Saw Marks:** Pit sawn and hewn on original members; circular-sawn material in additions.

**Nails:** Machine cut and headed nails in original – wire nails in additions