

Plan drawn in 1844 - Trusting that single establishments will be afforded -  
 A comfortable and cheap establishment for two families of our domestics.

The house by being drawn nearly to a square is as cheap in form as possible.

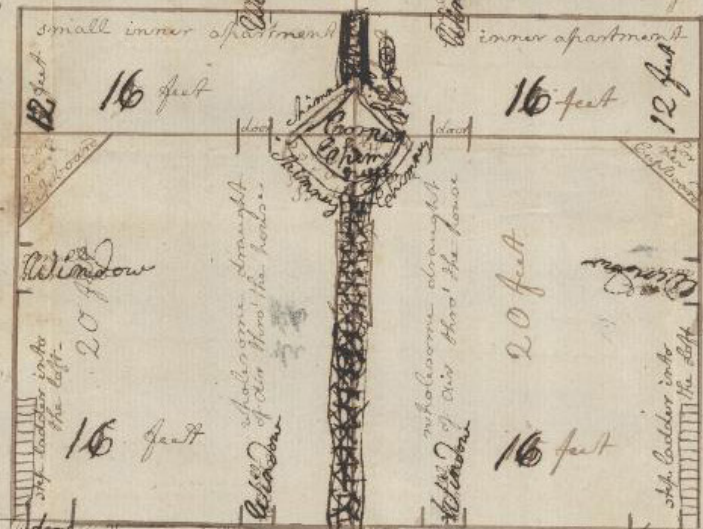
It would have been cheaper to have raised the walls and fixed Residents in the upper rooms - The building would also have had a handsomer external appearance; - but the comfort of the occupants is the object pursued, so far as can profitably be afforded. It is our duty to make our people happy and virtuous; - we never can do the latter but by showing an active desire for the former - and then exerting a zealous Christian authority over them as implied in St Paul's exhortation, "Let your rulers be diligent"

If the roof were put on to form a gable-end front, it would look better, and cast the rain off into the gardens instead of into the yards from the eaves of the house; a consideration well worth attending to. Should this be done the only alteration necessary in the order of the plan here laid down, will be to change the position of the step ladder, which of course must land above in the gable-end of the house, as the eaves being over with the upper floor, will not admit a landing place immediately under them.

The ceiling of the rooms to extend quite up to the eaves of the house - leaving above, only a loft for the lumber of the family below - In the gable-ends of each loft, ~~the~~ small windows, without light - having a shutter to open occasionally and give the light.

The corner cupboards will be a very trifling expense, and add much to the comfort convenience and neatness of the room - The brick wall, will form the back - plank will be only in front - they are to be from the floor quite up, the full pitch of the room - with division in the doors - so as to have an upper and lower cupboards. A meat chest, sufficient to hold a weeks allowance of meat for a family to be placed in each house.

Every spring half a bushel of lime, to be given to each Mother of a family with which she may in about half a day, perform the simple operation of white-washing her walls - This would add greatly to health, and even improve morals, by the idea of decency, cleanliness, and good order, it would impart - One good hair broom would serve in turn at every house, on each plantation - and would last several years. This only by attending to economy in trifles, that we can afford many comforts to our families.



post and railing to divide

Large Yard for Children - Hen-house - feeding the Cows in Winter &c - a few trees planted round it to shade it. Fruit trees preferable in the back ground out of the way of young childrens eating green fruit.

South Front Large Yard - The small sheds hanging over the outer doors, protect the rooms, from the hot Sun pouring in, and our heating them, and their wetting them with rain under the doors.

strong post and railing made close at bottom to keep pigs and fowls out of the garden

Post and railing built thick and strong to prevent interference between the two settlements

I think

Garden

yard



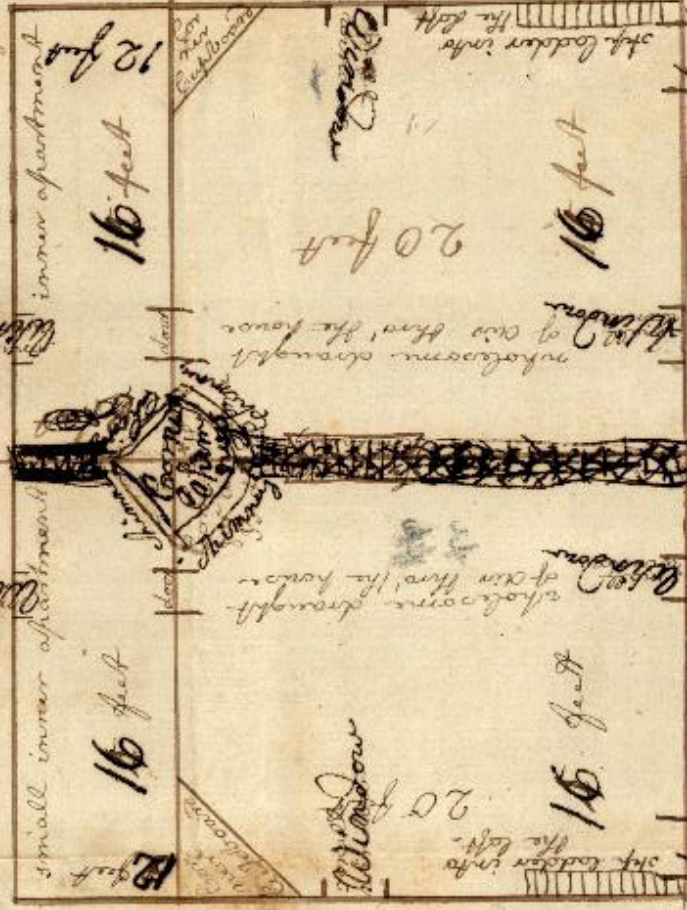
A mixture of lime and earth

order of the plan here laid down, will be to change the position of the step ladder, which of course must land above in the gable-end of the house, as the ears being even with the upper floor, will not admit a landing place imme- diately under them.

Garden

post and railing to divide it

Large Yard for Children + Flem-horse - feeding  
 The Cow in Winter &c - a few trees planted round it for shade it. Fruit trees preferable in the back ground out of the way of young childrens taking green fruit.  
 strong post and railing made close at bottom



be given to each Mother of a family with which she may in about half a day, perform the simple operation of white-washing her walls - this would add greatly to health, and would improve morals, by the idea of decency, cleanliness and good order, it would impart - One good hair broom would do in turn at every house, on each plantation - and would last several years. This may be attended to economy implies, that we can afford many comforts to our families.

order - and world last several years. This may be attended to economy implies, that we can afford many comforts to our families.

Yard and garden -  
 Large Yard -  
 The small sheds hanging over the walls doors, protect the rooms, from the hot Sun firing in and over heating the and Rain wetting them within. widen the doors.

strong post and railing made close at bottom

Plan drawn in 1814 – trusting that single establishments will be afforded.

A comfortable and cheap establishment for two families of our Domestics.

The house by being drawn to a square is as cheap in form as possible.

It would have been cheaper to have raised the walls and fixed residents in the upper rooms. The building would also have had a handsomer external appearance; but the comfort of the Occupants is the object promised, so far as can possibly be afforded. It is our duty to make our people happy and industrious; we never can do the latter but by sharing an active desire for the former – and then ascertaining a zealous Christian authority over them as implied in St. Paul's [expression], "Let your Rulers be diligent."

If the roof were put[?] on to form a gable-end Front, it would look better, and cast the rain off into the gardens instead of into the yards from the eaves of the house; a consideration well worth attending to. Should this be done the only alteration necessary in the order of the plan here laid down, will be to change the position of the step ladder, which of course must land above in the gable-end of the house, as the eaves being even with the upper floor, will not admit a landing place immediately under them.

The ceiling of the rooms to ascend quite up to the eaves of the house – leaving above only a loft for the lumber of the family below. In the gable-ends of each loft, small windows {without glass – having a shutter to open occasionally and air the loft.}

The corner cupboards will be a very trifling expense, and add much to the comfort convenience and neatness of the room. The brick wall, will form the back – plank will be only in front. They are to be from the floor quite up, the full pitch of the room – with division in the doors – so as to have an upper and lower cupboard. A neat chest, sufficient to hold a weeks allowance of meal for a family to be placed in each house. Every spring half a bushel of lime & 1 pint salt to be given to each Mother of a family with which she may in about half a day, perform the simple operation of white-washing her walls. This would add greatly to health, and even improve morals, by the idea of decency, cleanliness, and good order, it would impart. One good hair broom would serve for a white wash brush in turn at every house on each plantation – and would last several years. Tis only by attending to economy in trifles, that we can afford many comforts to our families.

A mixture of Lime and Earth make the best floors – the hearths should be of Brick.

The small sheds hanging over the outer doors, protect the rooms, from the hot sun poring in, and over heating them, and rain wetting them within under the doors.

Large yard for Children – Hen-house – feeding the Cow in Winter etc. – a few trees planted round to shade it. Fruit trees preferable in the back ground out of the way of young childrens cutting green fruit.

Strong post and railing made close at bottom to keep pigs out of the garden and yard.

This plan is left as my last legacy to my husband and child – to perform the work that has long lain in my heart without the power of performing it. My dear husband you have hitherto declined it from thinking your finances did not sanction the expense – but I pray God, and I have long prayed to him to show you how to accomplish this faithful "doing as you would be done by." I would greatly prefer separate establishments for every different family. I merely leave this plan for cheapness – hoping single

habitations with large outer room and a comfortable bed-room, for decent refinement for the girls of a family may be built – and may God be the Guide.

Ann Randolph Meade page