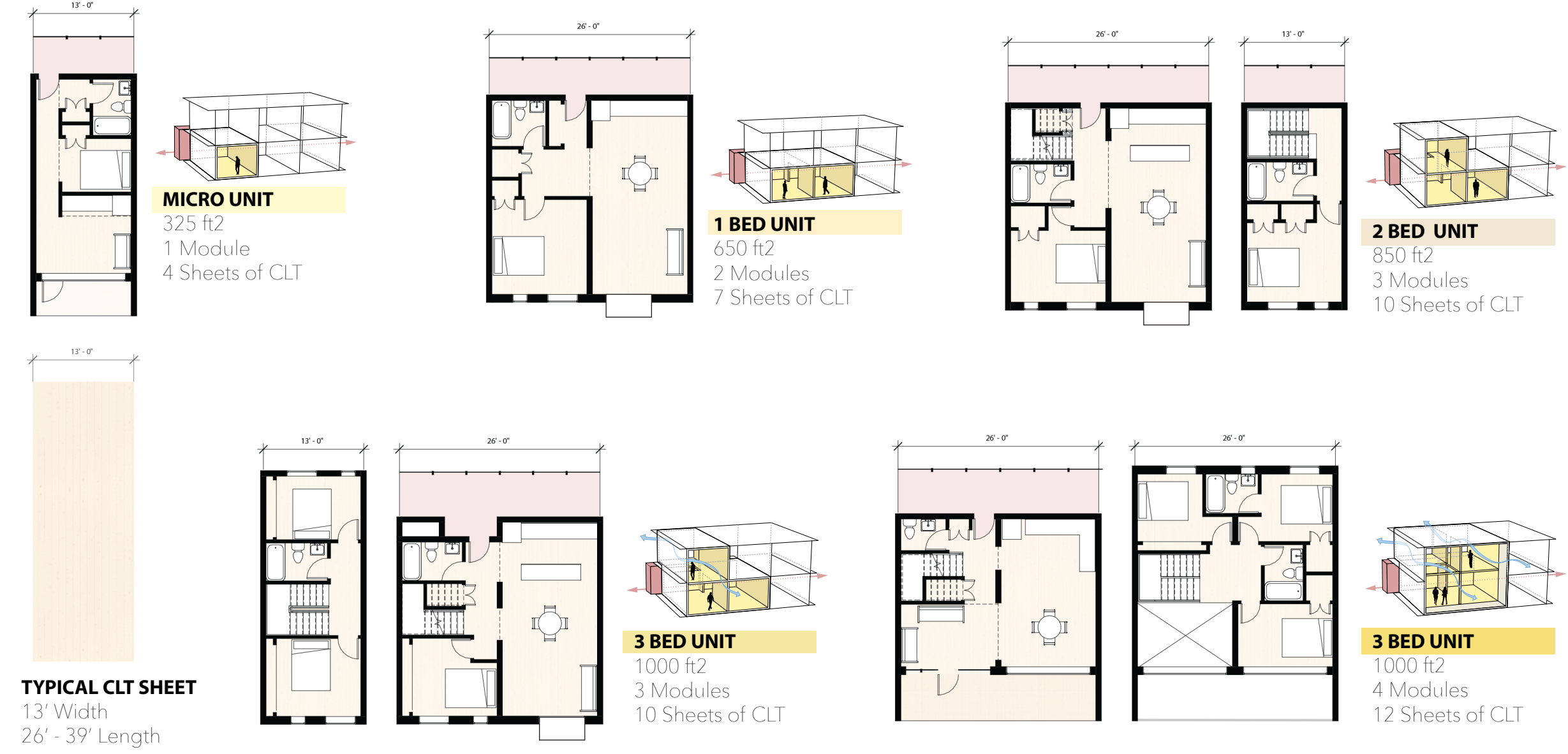


Building Program

Residential Building



Inhabit

Residential units use a modular system based on the standard CLT sheet to create units fitting between one and four modules each. Skip-stop corridors allow cross flow ventilation in units, while a single loaded corridor on the north provides an acoustic

buffer from the Queensboro Bridge. Every third floor includes a double height flexible social space with outdoor terrace to provide usable, amenable space for small communities within the building.



Queen's Plaza