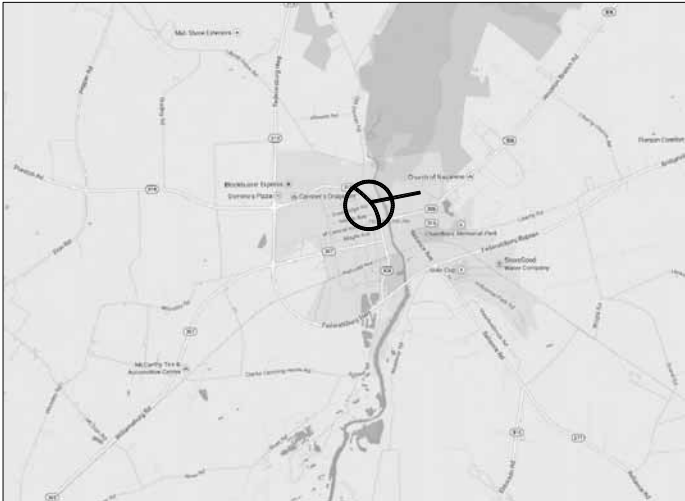


DRINAGE AREA MAP
 PREPARED IN COOPERATION WITH
UNIVERSITY OF MARYLAND
CLARK SCHOOL OF ENGINEERING INTERNS
RAUCH, INC.
AND THE TOWN OF FEDERALSBURG

DRAWING INDEX:

- SHEET 1: TITLE SHEET
- SHEET 2: DRAINAGE AREA MAP
- SHEET 3: DRAINAGE AREA MAP
- SHEET 4: DRAINAGE AREA MAP



LEGEND
 ○ DRAINAGE AREA NUMBER
 — IMPERVIOUS SURFACE BOUNDARY
 — DRAINAGE AREA BOUNDARY

 engineering design & development services	RAUCH, Inc. office: 410.770.9081 fax: 410.770.3667 email: design@raucheng.com web: www.raucheng.com 110 N Washington St Easton, MD 21601	DRAINAGE AREA PLAN	
		FEDERALSBURG	04/28/2014
		5th Election District	
		Caroline County, Maryland	1 OF 4

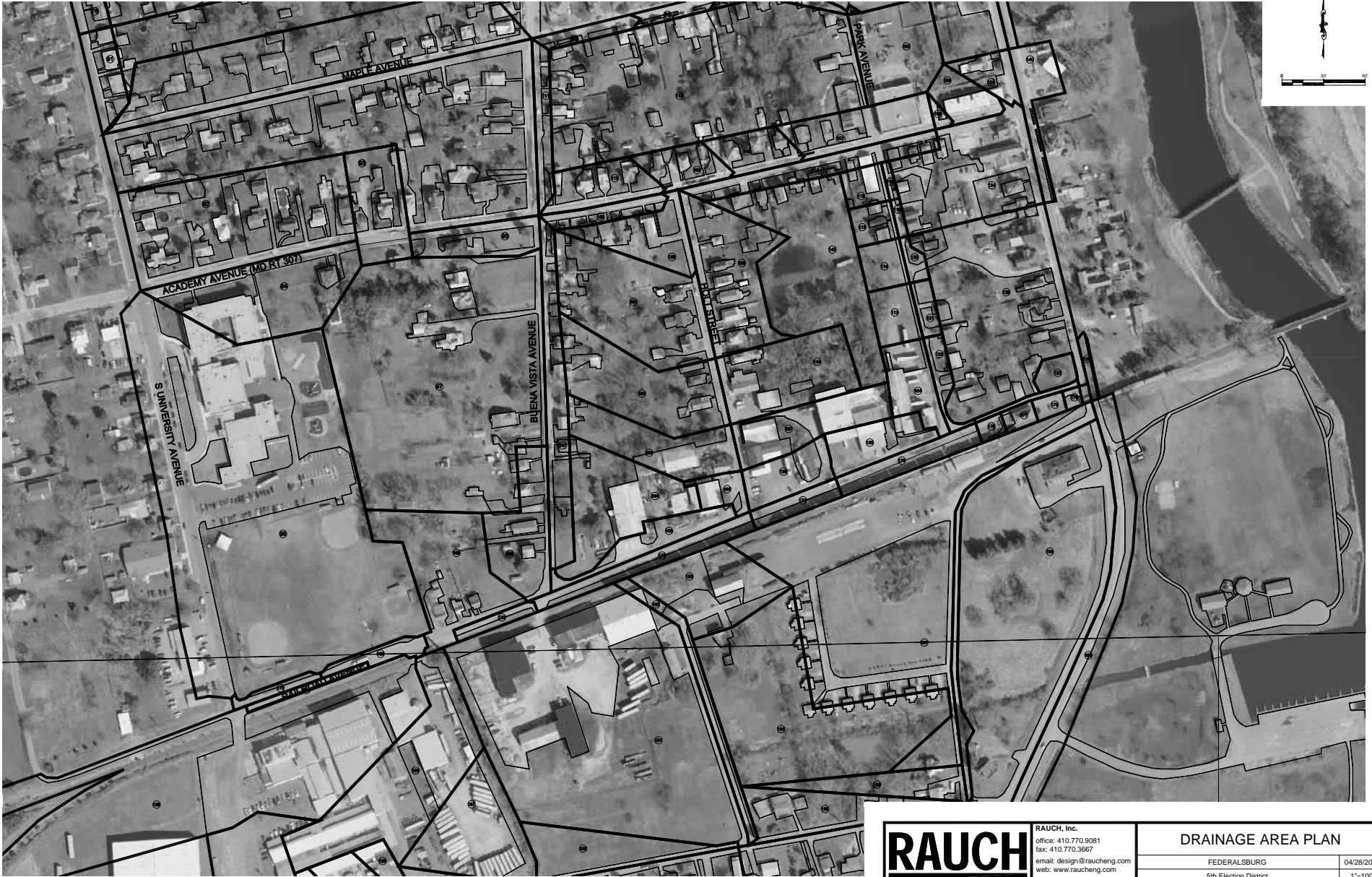


RAUCH
 engineering design & development services

RAUCH, Inc.
 office: 410.770.9081
 fax: 410.770.3667
 e-mail: design@raucheng.com
 web: www.raucheng.com
 110 N Washington St
 Easton, MD 21601

DRAINAGE AREA PLAN

FEDERALSBURG	d4/28/2014
5th Election District	1"=100'
Caroline County, Maryland	2 OF 4

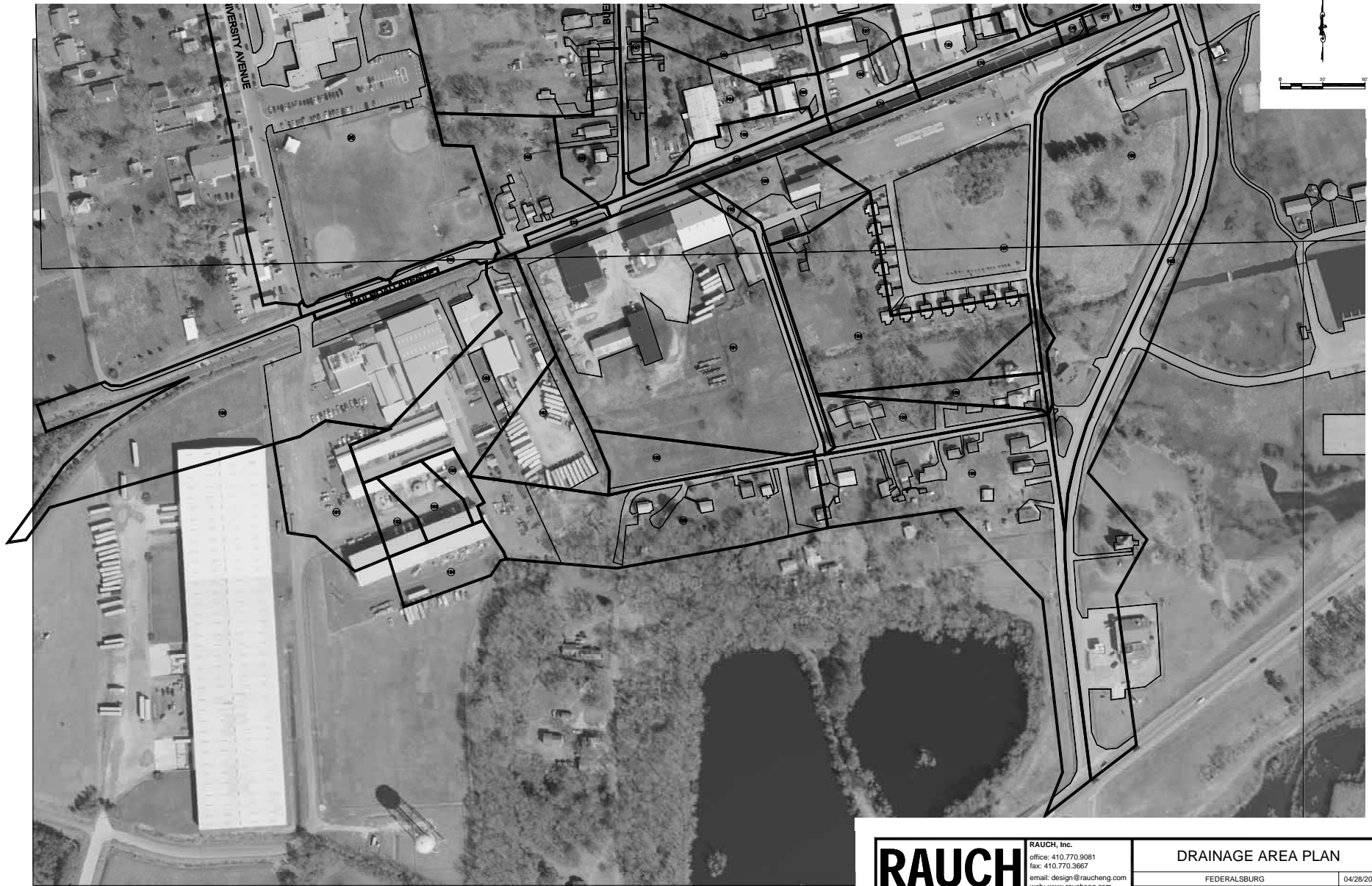


RAUCH
 engineering design & development services

RAUCH, Inc.
 office: 410.770.9081
 fax: 410.770.3661
 e-mail: design@raucheng.com
 web: www.raucheng.com
 110 N Washington St
 Easton, MD 21601

DRAINAGE AREA PLAN

FEDERALSBURG	04/28/2014
5th Election District	1"=100'
Caroline County, Maryland	3 of 4



RAUCH
 engineering design & development services

RAUCH, Inc.
 office: 410.770.9081
 fax: 410.770.3667
 e-mail: design@raucheng.com
 web: www.raucheng.com
 110 N Washington St
 Easton, MD 21601

DRAINAGE AREA PLAN

FEDERALSBURG	04/28/2014
5th Election District	1"=100'
Caroline County, Maryland	4 of 4