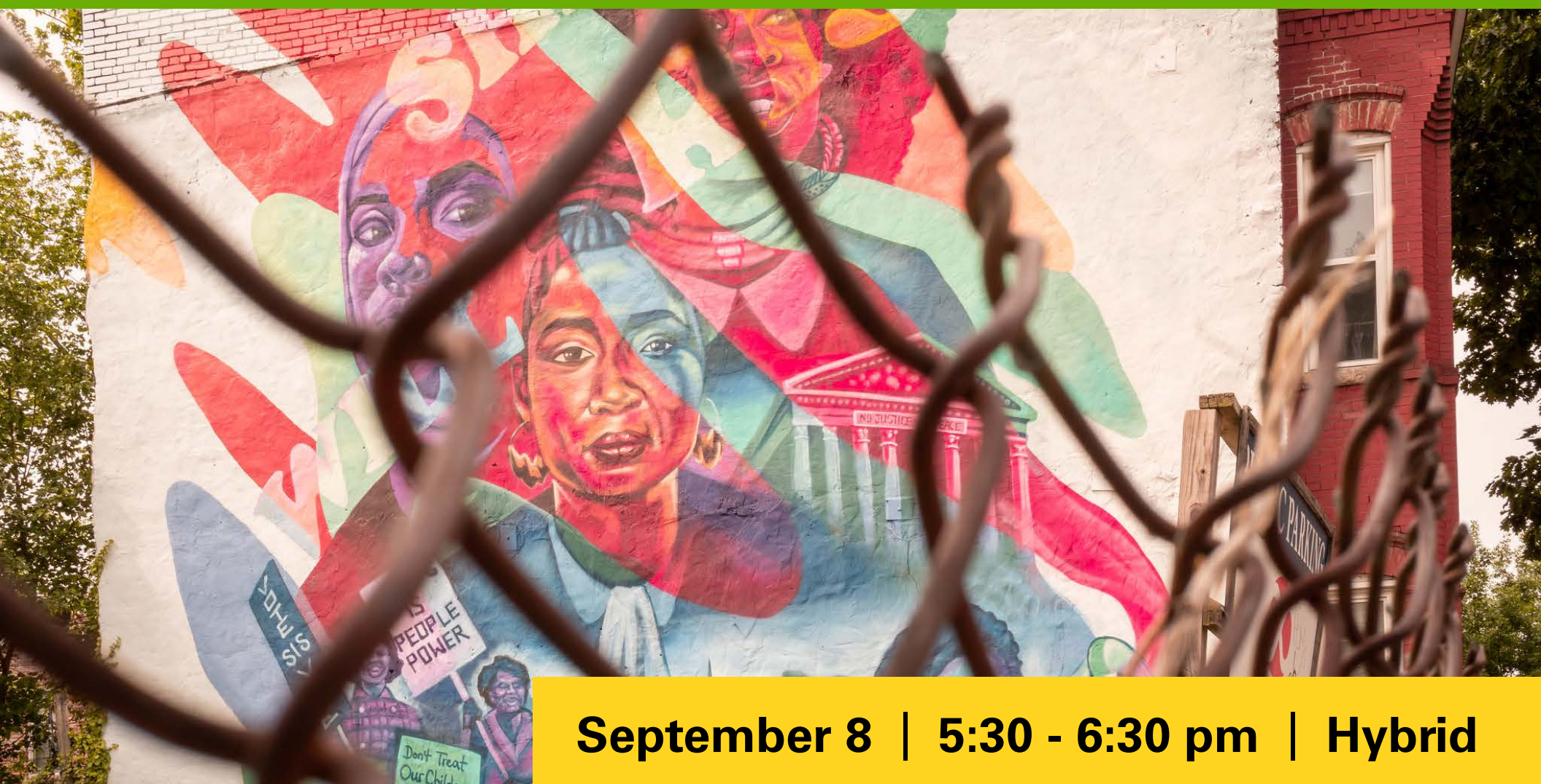


Restorative Justice's Opportunities and Challenges in Lakeland, College Park

Interdisciplinary Dialogue Series (#1)



September 8 | 5:30 - 6:30 pm | Hybrid

Photo courtesy of Ted Eytan via [Flickr](#). Artist: Rachel Wolfe-Goldsmith

Dialogue #1

This session is an introduction to the Dialogue Series and to the Lakeland community. Topics include past and current planning challenges in Lakeland and formation of the Restorative Justice Commission in College Park and addresses the questions:

- What is restorative justice?
- What are or should be the goals of the Restorative Justice Commission?

Dialogue Participants

- **Dr. Mary C. Sies**, Lakeland Community Heritage Project
- **Maxine Gross**, Lakeland community leader
- **Terry Schum**, College Park planning representative
- **Professor Andrew Fellows** and **Dr. Isabella Alcañiz**, Restorative Justice Commissioners

Registration is required.



Registration & Details



SCHOOL OF
ARCHITECTURE,
PLANNING & PRESERVATION

go.umd.edu/restorative_justice1

Maryland's Built Environment School