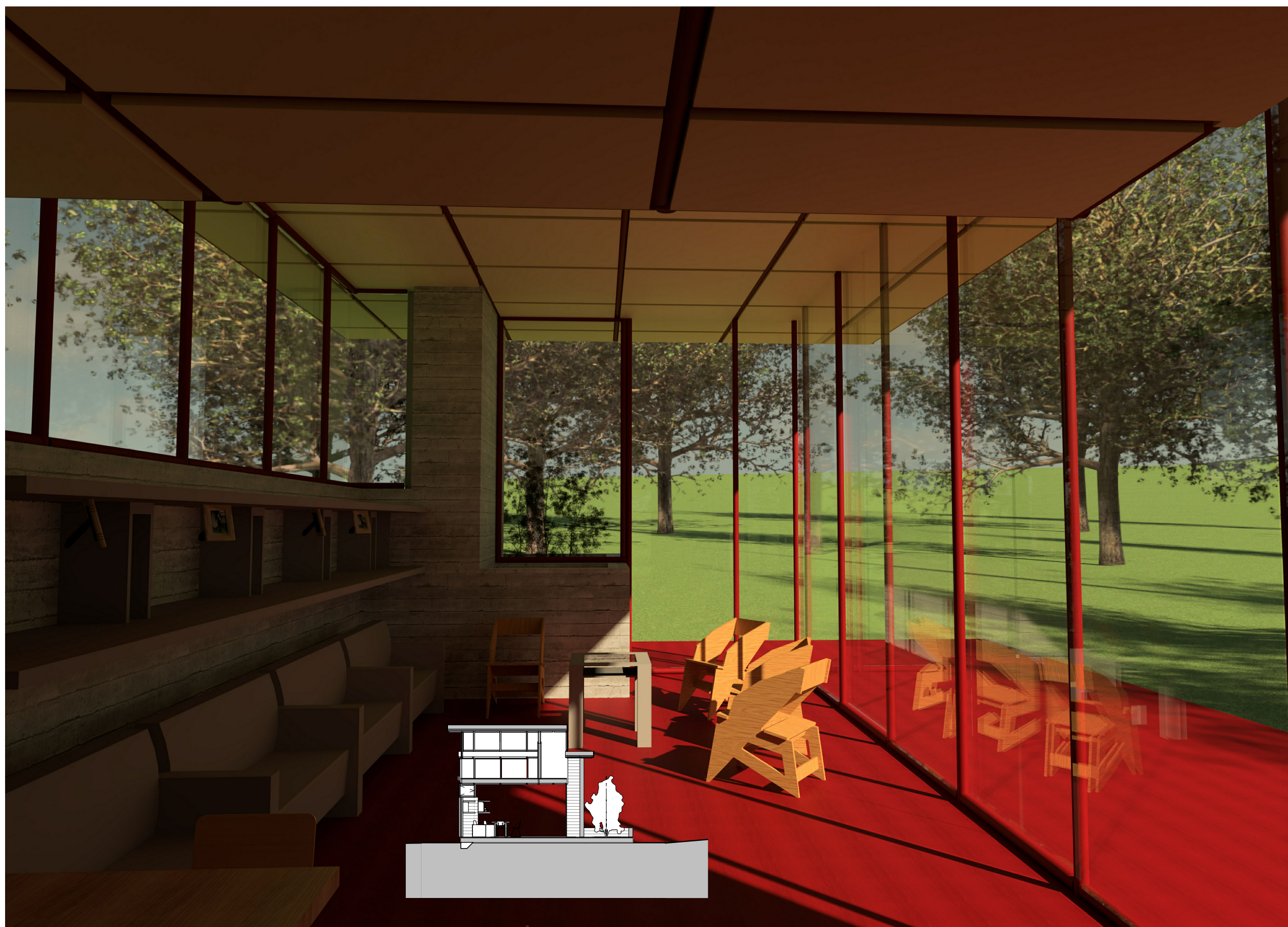


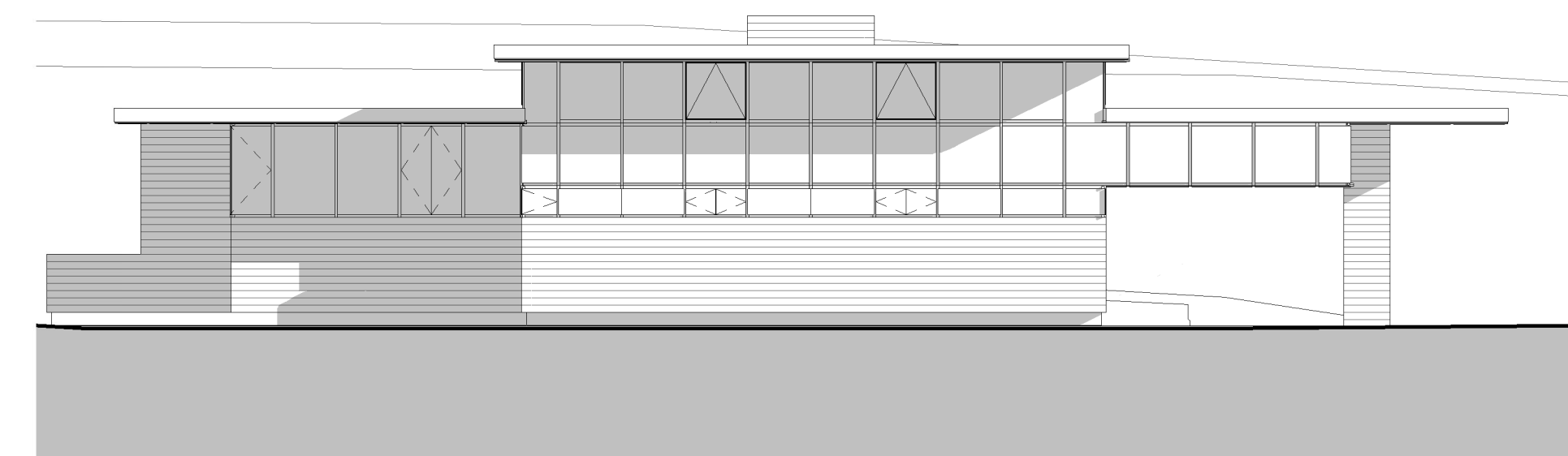
LONG SECTION  
1/16" = 1'-0"



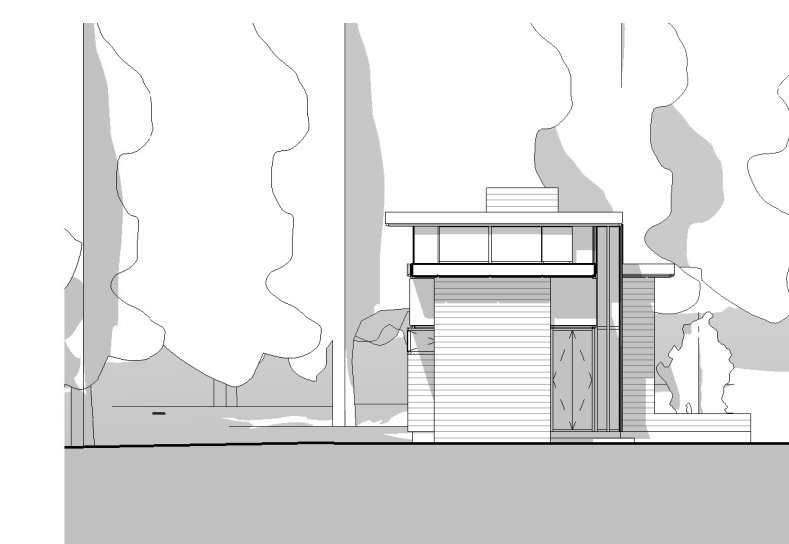
EAST ELEVATION  
1/16" = 1'-0"



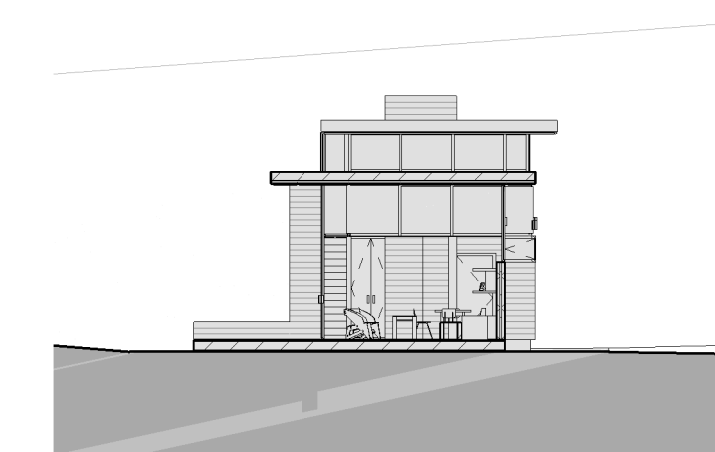
TRANSVERSE SECTION AND  
PERSPECTIVE  
1/16" = 1'-0"



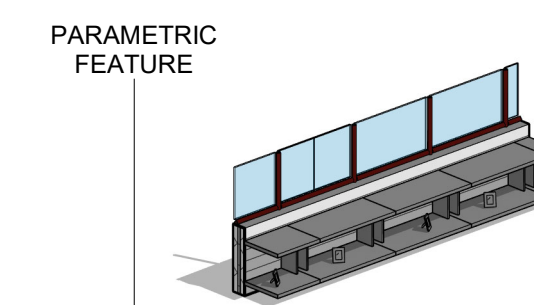
WEST ELEVATION  
3/32" = 1'-0"



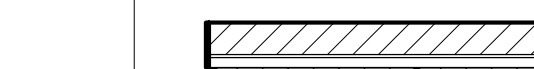
SOUTH ELEVATION  
1/16" = 1'-0"



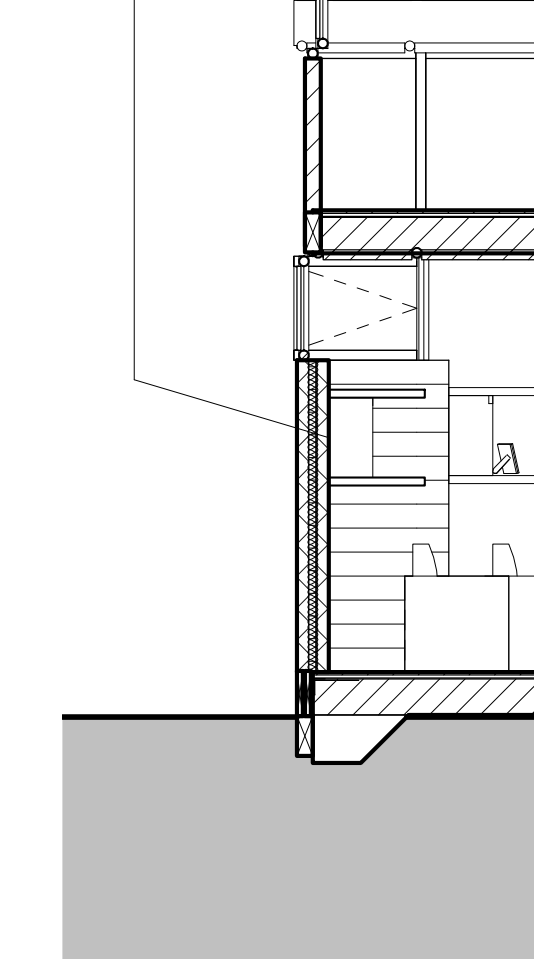
NORTH ELEVATION  
1/16" = 1'-0"



PARAMETRIC  
FEATURE



SHELVING  
DETAIL



WALL SECTION  
1/4" = 1'-0"



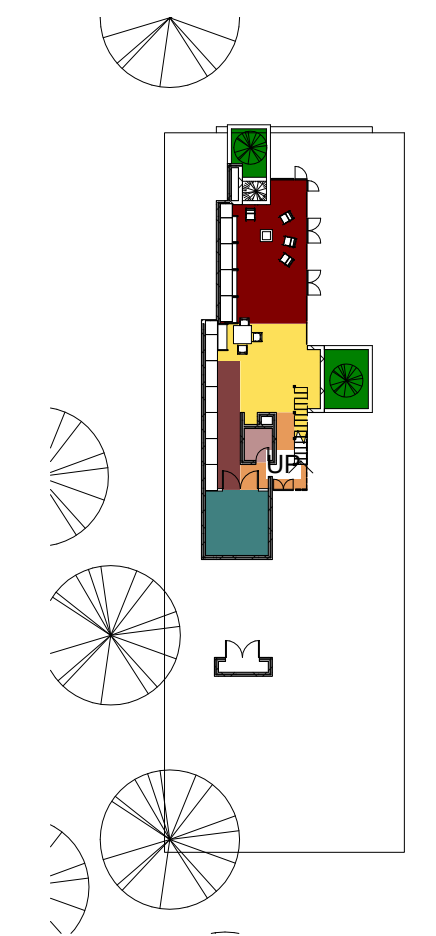
FIRST FLOOR INTERIOR



ENTRANCE

Rooms

- DINNING
- ENTRY
- LIVING
- PLANTING
- SHOP
- UTILITIES
- WORKSPACE



1st FLOOR  
1/32" = 1'-0"

ROOM SCHEDULE		
FLOOR	ROOM NAME	AREA
1st FLOOR	DINNING	246 SF
1st FLOOR	ENTRY	71 SF
1st FLOOR	LIVING	314 SF
1st FLOOR	PLANTING	72 SF
1st FLOOR	PLANTING	43 SF
1st FLOOR	SHOP	113 SF
1st FLOOR	UTILITIES	25 SF
1st FLOOR	WORKSPACE	124 SF
1st FLOOR		1008 SF
2nd FLOOR	BATH	39 SF
2nd FLOOR	BEDROOM	118 SF
2nd FLOOR	BEDROOM	81 SF
2nd FLOOR	BEDROOM	528 SF
2nd FLOOR	HALLWAY	132 SF
2nd FLOOR	STORAGE	255 SF
2nd FLOOR		1153 SF
TOTAL AREA		2161 SF

# LOUIS PENFIELD HOUSE

Architect  
Frank Lloyd Wright

Course Number ARCH 472

Date Dec 4th, 2019

Drawn By Maria F. Farieta

Willoughby Hills, Ohio

Year Built 1955